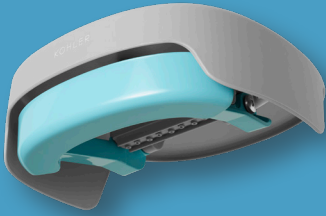


# KOHLER Cleanse

HYGIENE



The Kohler Cleanse is a wrist-operated hand washing station. It requires only a gravity-led source to provide water flow suited for handwashing and other sink activities. The Cleanse is a must-have for areas where sanitation practices are inaccessible.

## KEY FEATURES

- Highly Effective** — Top-tier water efficiency provided by low flow design and self-closing valve
- Globally Certified** — Certified by GB/T Material Testing, a standardization for materials in a water supply system
- Durable** — Made to withstand outdoor and institutional use
- Long Lasting** — Product tested to last for up to 300,000 handwashing cycles
- Versatile Application** — Adaptable nut works with free-flowing water or attaches to the underside of buckets
- Seamless Installation** — Incorporates directly into water delivery systems already in use
- Water Saving** — Wash hands with as little as 100mL of water
- No Plumbing Required** — No need for advanced plumbing system



# BENEFITS

- 💧 **No Power Needed** — Implement the Cleanse anywhere. For schools, outdoor workspaces, and the home, it is engineered to implement right away where handwashing is inaccessible.
- 💧 **Promotes Dignity** — Handwashing prevents the spread of germs, and therefore, of illnesses. The use of a portable handwashing station allows for skincare and facial hygiene, promoting dignity and smiles across the world.



Our mission at Business Connect is to provide citizens living in the global south with affordable and easy access to clean water, through the creation of a sustainable, local business model. We are headquartered in Grand Rapids, Michigan and have a global network of distributors that impact more than 70 countries. Through every purchase, you are supporting entrepreneurs in the global south to build their own businesses, help themselves out of poverty, and provide access to clean water in their community.



4064 Division Ave S,  
Grand Rapids, MI 49548  
1-833-BC-WORLD (+1-833-229-6753)  
contact@businessconnectworld.com  
<https://businessconnectworld.com>

**KOHLER.**

Distribution  
Partner

